

# Sculpture Gallery

Welcome to the G.F Watts Sculpture Gallery! George was inspired by sculpture all his life. He started as an apprentice at a sculptors studio when he was 10 years old.

WATTS  
GALLERY  
ARTISTS'  
VILLAGE

## Explore the Touch Wall

George used all kinds of materials to create his artworks. Can you pair the material with the sculpture?



Gesso Grosso



Alabaster



Bronze

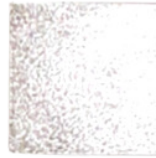


Terracotta

## Sketching

Sketch your favourite sculpture in the gallery.

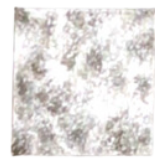
### Sketch textures



Stippled



Polished



Coarse



Cross  
hatching

## Fill in the gaps

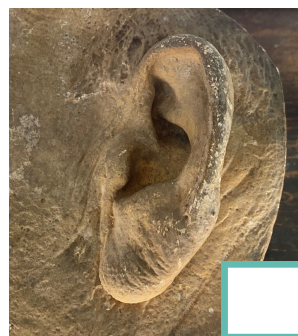
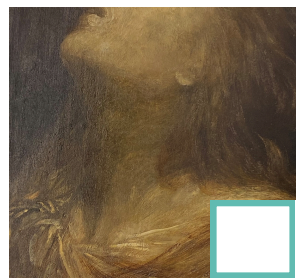
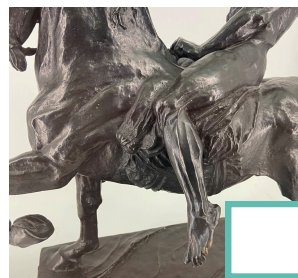
Spend a few minutes looking around the gallery - can you find the missing answers?

1) What is the name of Lord Tennyson's Dog?  
\_\_\_\_\_

2) How many plaster heads are on display?  
\*hint - look up!\* \_\_\_\_\_

3) Where was the head of Medusa likely made? \_\_\_\_\_, Italy

## Find these objects



## Smartify, our free audio guide

1. Go to the Apple App Store or Android Google Play store.
  2. Download the Smartify app.
  3. Open the app and hold your phone camera up to your chosen artwork.
  4. Plug in your headphones, and listen to the audio tour.
- Alternatively, you scan the QR code on the walls and enjoy the selected audio content.

